

Installation Instructions

GL18007-30

Trailer Hitch

440 South Pine Street
Burlington, WI 53105
262-763-8222
rivcoproducts.com



2012 & NEWER GL1800 TRAILER HITCH INSTALLATION INSTRUCTIONS

#GL18007-30

Read through these instructions completely before attempting installation, and lay out all pieces including the numbered hardware bags to familiarize yourself with all parts - see photo #1.

1. Place the motorcycle on its centerstand; remove the seat (four 6mm Allen screws securing the grab handles to the seat), painted side covers (this will require opening the saddlebag lids), and gray plastic frame covers surrounding the rear crash bars and passenger floorboards (three 5mm Allen screws on each). Remove the rear fender by first removing the four 5mm Allen screws as shown in photo (2A).
2. Remove the rear crash bars and lower sub-frames (photos 3 A & B) mounting bolts. Next - drill out the threads of the sub-frame mounting bolt hole on the right side **ONLY** (photo 3B) using a 5/16" drill. (This is required due to the limited space between the hitch and rear suspension.) The new bolt supplied for this hole is longer and will now screw into the threaded hole on the right side of the hitch's frame.
3. Install the right frame reinforcement plate (item 1F). Referring to photo (#3), start two of the M8 x 25mm bolts from bag #1 into the upper holes - just a few threads, do not tighten. Install the left frame reinforcement plate (photo 1G) using the two remaining M8 x 25mm bolts from bag #1 in the upper holes - again start just a few threads, do not tighten. Install the longer of the two remaining bolts from bag #1 (M8 x 50mm) in the lower hole on the left side, and tighten this bolt securely (26-28 ft lbs.). The remaining shorter bolt will be installed on the right side later.
4. Referring to photo (4A) remove the upper sub-frame from mainframe mounting bolts. Referring to photo (4B) unplug all of the small wires that run under the end of the black sub frame and re-route them around the outside of the sub frame, then back thru the holes in the silver main frame (photo 4C) and reconnect them. This will make more room for the struts that will be installed in the next step.
5. Install the left and right struts (photo 1 items B and C), they are marked "left inner" and "right inner" by sliding them up from below between the inner fender and saddlebag, starting in a nearly vertical position. (See photo #5). The right side will be more difficult and require some twisting" to get them into position. Take care not to pinch or cut any of the wire looms near the mounting holes. It will help to have another person guide the strut from the top and tell you how to maneuver it for it to slide up into place. Once in place install the 5/16" X 2 1/4" long bolts, washers, and nuts from bag #2 through the frame, sub-frame, and struts. Snug only - do not tighten. Angle the bottom of the struts to the rear as far as possible and move the rubber drain hose near the rear of the left strut around to the other side of the strut. Locate the heat shield on top of the right muffler (this is to keep the rear brake caliper cooler). Remove the 10mm acorn nut at the rear of the heat shield and replace it with the regular 10mm nut supplied.
6. Install the hitch main frame (photo (1), item A) as shown in photo (6) by placing it around the rear wheel and below the mufflers. Angle the right side up and over the right muffler. As shown in photo (7), push the left side up over the left muffler. Note: this will require some force and slight flexing of mufflers. Slide the left side of the hitch over the end of the M8 x 50mm bolt installed earlier in step #3. Locate the remaining M8 x 40mm bolt from bag #1. Apply a small amount of Loc-Tite or similar thread locking compound (not included) to the bolt. Align the right side of the hitch and install the bolt as shown in photo (3B), threading it into the hole of the hitch - then tighten securely (26-28 ft lbs.). Install the 8mm nut from bag #1 on the left side and tighten to (20-22 ft lbs.) while holding the bolt head with a wrench. Remove the 8mm x25mm bolts started earlier and install the rear crash bars using these longer bolts and tighten securely (26-28 ft lbs.). Reinstall the gray plastic frame covers.
7. Align lower strut holes with the mating holes in the main hitch. Note: the struts mount outward of the tabs on the main frame. Install the 3/8"x1 1/4 long bolts, washers, and nuts from bag #2. Do not tighten; snug only.

8. Install the receiver block (item 1E) onto the main hitch frame using the 1/4" X 1 3/4" long bolts from the top down, then flat washers, and nylock nuts from bag #3 onto the bottom and snug only at this time. As shown in photo (9) install the tongue (item 1D) and hitch pin into the receiver then tighten the four 1/4" x 1 3/4" bolts securely. (12-14 ft lbs.) Next - remove the hitch pin and adjust the setscrews on the top and side of the receiver block so that the tongue slides in and out snug but does not rattle. These can be adjusted periodically as needed. Remove the pin and tongue from the receiver block and set aside.
9. Lay the fender upside down on a soft cloth or towel. Cut out the template from the instruction sheet as shown in photo (8). Lay the template over the fender as shown in photo (8). Scribe or mark a line around the rectangular hole of the template onto the fender. Cut 1/2" off the bottom edge of the ribs as shown on the template. Next cut out the rectangular portion to the line. This is best done using a small grinder or Dremel type moto-tool with a 1/8-router bit. Do not worry if you go slightly over the line or your lines are not perfectly straight. The trim will cover fairly large imperfections. Fit the trim into the opening with the seam centered at the bottom. Cut to length using a razor blade or sharp knife. Carefully use a small amount of super glue under the edge of the trim both inside and out as well as the seam, being careful not to get it on the visible portion on the outside of the fender.
10. Remove the license plate and its mounting bracket from the rear fender. Install the license plate bracket onto the supplied relocation bracket as shown in photo (10). Place two of the remaining supplied 1/4" washers over the studs on the license plate bracket (photo 10A) then the license plate relocating bracket (photo 10B). Reinstall the original nuts onto the studs and tighten securely. On the outside of the fender reinstall the two original flanged washers into the license plate mounting holes. Reinstall the license plate mount with bracket assembly so that it is raising the plate up to clear the hole in the fender using the two supplied 6 x 16 mm button head screws and flange nuts supplied. Reinstall the license plate onto the bracket.
11. Replace the rear fender temporarily snapping it into place only. Install the tongue thru the hole. Adjust the hitch receiver height to center the tongue in the opening by moving the lower end of the struts forward or back in their slotted bolt holes. Carefully remove the tongue and rear fender, and tighten the lower strut bolts securely. (35-38 ft lbs.) Next tighten the upper strut to frame mounting bolts securely. (25-28 ft lbs.)
12. Wiring: Refer to the supplied wiring instructions page. Unless you have all LED lighting on your trailer it is **STRONGLY** recommended to use an electronic trailer wiring isolator (not supplied) RIVCO pt# GL18007-IU. It is designed to draw the additional 7-10 amps of power needed for the trailer's lighting directly from the battery, not thru the brake, tail or turn signal circuits of the motorcycle. The isolator senses when power is applied to these circuits and activates the trailer lighting accordingly. It is a solid-state electronic device that will protect the motorcycle's advanced electrical systems. It will supply up to 10 amps per circuit to the trailer. **NOTE!** The isolator is designed for trailers with a five-wire system, which, like the motorcycle will have separate turn signal bulbs. If the trailer you will be towing has a four-wire system (combined brake and stop lights) you will also need to add a five-to-four wire convertor in line before the isolator (not supplied) RIVCO pt# EC07664. They can also be purchased at most auto parts stores.
13. Installing tongue and hitch pin: Before reinstalling the rear fender permanently, practice installing the hitch pin into the receiver and tongue as described by the following procedure; refer to photo #9, this will help you to better visualize how to install the tongue and pin when the fender is installed. Place one hand on the backside of the receiver slot, and with the tongue in the other hand push the tongue into the receiver until it is flush with the back of the slot. Insert the supplied pin through the receiver and tongue from the bottom-up to align the holes in the receiver with the hole in the tongue, and remove the pin. Now install the pin from the top down by holding the pin in one hand with two fingers and guiding it to the hole with two fingers from your other hand as shown in photo #9. Install the bowtie clip into the hole at the bottom of the pin being sure the clip is fully engaged to its locking position.
14. Replace the side covers, seat and rear fender.

15. Safety chain hook holes are provided on the vertical flange of the main hitch frame just below the receiver block.

TRAILER TOWING GUIDELINES AND SAFETY

Remember that this is only a guide and should be supplemented with your own common sense for safe operation.

WARNING: TOWING A TRAILER BEHIND A MOTORCYCLE IS DONE SO AT YOUR OWN RISK AND INCREASES THE LIKELIHOOD OF INJURY OR DEATH TO BOTH OPERATOR AND PASSENGER DUE TO INCREASED RISK AND EXPOSURE. FAILURE TO OBSERVE THE FOLLOWING WILL FURTHER INCREASE THE RISK OF INJURY OR DEATH TO OPERATOR AND PASSENGER.

- (A) ALL HIGHWAY SAFETY WARNINGS, RULES AND LAWS,
- (B) MAINTENANCE AND OPERATION INSTRUCTIONS ASSOCIATED WITH THIS HITCH OR YOUR TRAILER,
- (C) POSTED SPEED AND ROAD CONDITION WARNINGS,
- (D) SAFE RIDING PRACTICES AND PROCEDURES

We are aware of no current state or federal guidelines for pulling a trailer with a motorcycle. We suggest when pulling and loading a trailer that you do not exceed the manufacturers Gross Vehicle Weight and tongue weight limits. When pulling a trailer with a motorcycle, extra distance must be allowed for stopping. When cornering, use slower speeds and a wider angle of attack. Use extra caution at all times, particularly if the road surface is wet or slippery. Splitting lanes with a trailer is HIGHLY discouraged and is ILLEGAL in many states.

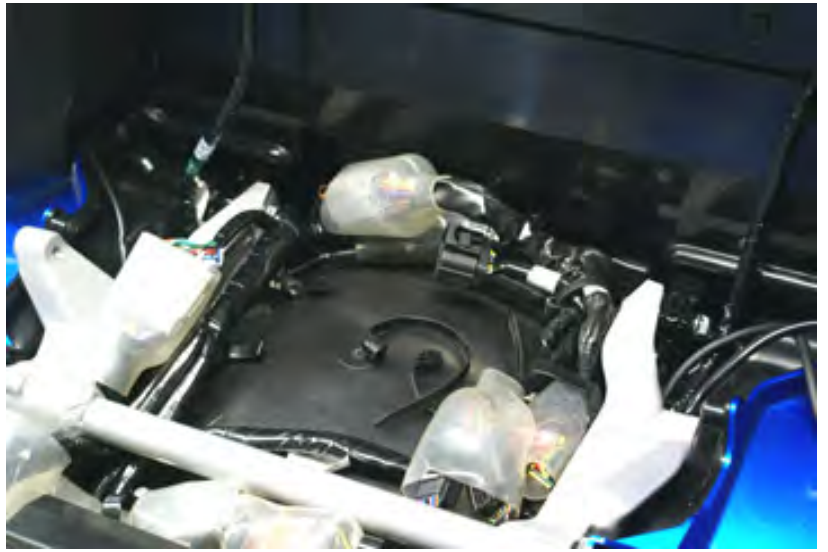
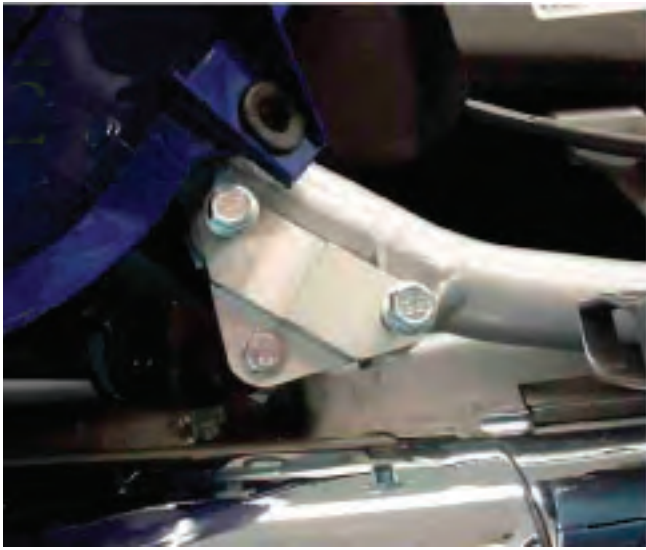
IMPORTANT: AS A SAFETY PRECAUTION CHECK THE FOLLOWING BEFORE EVERY TRIP:

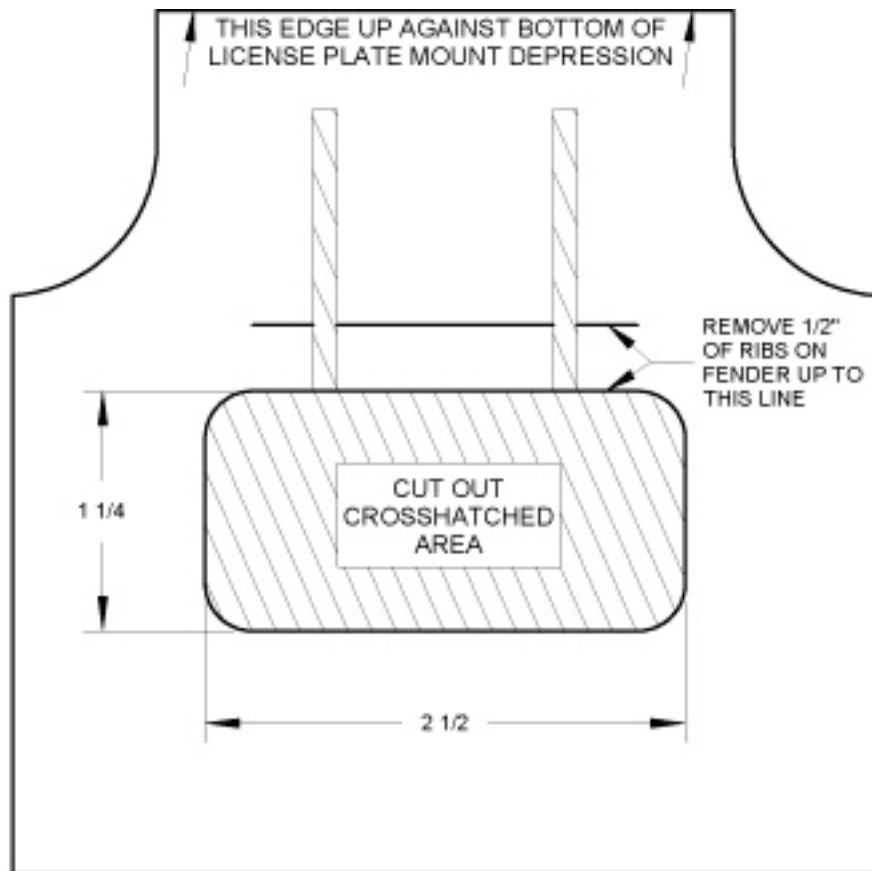
- *Visual Inspection of Hitch and Mounting Bolts. *Safety Chains are Attached Properly.
- *Trailer Lights Function Properly. *Hitch Pin on & Clipped. *Check Air Pressure In Trailer Tires.

Thank you for purchasing a RIVCO Product!

Please register your RIVCO product online at <http://www.rivcoproducts.com/warranty>.







CUT OUT & LAY OVER
INSIDE OF REAR FENDER